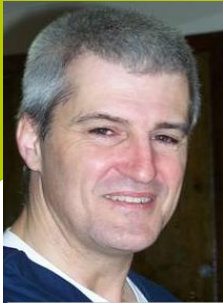


Financial assistance for training and education at Arkansas Northeastern College

Assistance available for childcare, transportation and other needs

Career counseling to help put YOU on the right path



"There is nothing feminine or masculine about caring for the sick."

Tim Johnson
LPN Graduate



"I want a degree that will get me through the gate instead of working the gate"

Rikita Vaden
Steel Industrial
Technology student

For more information
Go to www.anc.edu website
Click on Career Pathways link



Get on your path to a better life.
Call us today!
870-762-1020



Want to go to college?
Need a second chance?

Get Your GED
Earn an Employability Certificate
Earn a WAGE Certificate
Enroll in College Classes

START TODAY



"I'm so proud of my mommy"
Carlee-Beth Nichole Bradberry

Daughter of Nichole Bradberry,
Early Childhood Education student



Do you struggle to provide the things your family needs and deserves?

Arkansas Career Pathways can help.



"Career Pathways has made my educational journey easier."

Stephanie Beckett
RN student

Arkansas Career Pathways offers free career training and college classes to those who qualify. But that's not all. In addition to educational programs, Pathways may be

able to help you overcome other barriers that have kept you from getting the training and education you need.

Eligibility Requirements:

*You must be a parent/grandparent with a child under age 21 who is your dependant and is living in your home.

You must also meet at least one of the following:

Be receiving Transitional Employment Assistance (TEA) now, or have received TEA in the past.

OR

Be receiving Food Stamps or Medicaid for you or your children including ARKids.

OR

Have an annual family income below 250% of federal poverty level (about \$46,000 annual for a family of three).

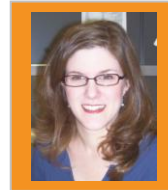
Worried about finding a job when you're done? Pathways assists with your job search.

Don't know where to start? Pathways will provide you with a career counselor to help you choose classes, get enrolled, find childcare, assist with transportation, and many other services to help you.

CALL TODAY

Blytheville Campus:

2501 S. Division
Blytheville, AR 72315
Phone: (870) 762-1020 ext. 1189
Pathways Advisor:
Beverly Rogers
Direct Line: (870) 780-1264



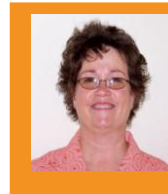
Burdette Campus:

Hwy 148 & I-55
Burdette, AR 72321
Phone: (870) 763-1486
Pathways Advisors:
Mary Gaston
Direct Line: (870) 838-2975
Barbara Baker (M, T, F)
Direct Line: (870) 780-1235



Paragould Campus:

1032 W. Kingshighway
Paragould, AR 72450
Phone: (870) 239-3200
Pathways Advisor:
Barbara Baker (T, W)



Your Path To A Brighter Future

ANC offers a wide variety of career programs, some of which can be completed in less than a year. You can start preparing for a higher paying career today.

Pathways will help you learn to fill out job applications, dress for an interview, or complete your GED requirements. You can also achieve higher levels of training that can help you get a better-paying career like nursing, medical transcription, or industrial technology.

Or have you ever thought about becoming a welder, truck

driver or an emergency medical technician?

Pathways can help you prepare for any of these

jobs that are currently in high demand. Check out our complete list on www.anc.edu

under the Career Pathways link.



**Want to find out more?
Call today 870-762-1020**